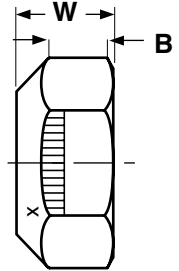
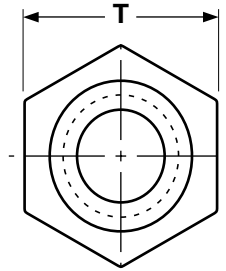




# Nuts

## Stover® Lock Nuts



Nominal Size in Inches	T			W		B
	Width Across Flats			Overall Thickness		Hex Height
	Nom	Max	Min	Max	Min	Min
1/4	7/16	0.4385	0.428	0.226	0.212	0.145
5/16	1/2	0.5020	0.489	0.273	0.258	0.166
3/8	9/16	0.5645	0.551	0.337	0.320	0.198
7/16	11/16	0.6895	0.675	0.385	0.365	0.223
1/2	3/4	0.7520	0.736	0.448	0.427	0.262
9/16	7/8	0.8770	0.861	0.496	0.473	0.286
5/8	15/16	0.9395	0.922	0.559	0.535	0.329
3/4	1-1/8	1.1270	1.088	0.665	0.617	0.382
7/8	1-5/16	1.3145	1.2690	0.776	0.724	0.450
1	1-1/2	1.5020	1.4500	0.887	0.831	0.513

**The value-added source for quality bolts, screws, nuts, washers and other industrial fasteners.**

3211 West 9th Street, Trainer, PA 19061-5242 TOLL FREE: 1-800-662-7459 LOCAL: 610-485-5700 FAX: 610-485-5877

E-MAIL: [sales@coburnmyers.com](mailto:sales@coburnmyers.com)